

Innovation of University Ideological and Political Education Model with the Fundamental Task of Cultivating Virtue and Talents

Liyuan Guo

Liaoning Communication University, Shenyang, 110000, Liaoning, China

guo18231196880@126.com

Keywords: "Foster Morality and Cultivate People"; Ideological and political education; Mode innovation

Abstract: Firstly, this article analyzes the characteristics of the traditional ideological and political education (IPE) model and the challenges it faces, such as the low participation of students and the disconnection of educational content from the times, and then points out the lack of the idea of cultivating people by virtue in IPE. In order to meet these challenges, this article puts forward a new mode of IPE that integrates the idea of moral education, including the student-centered teaching concept and the curriculum design that combines moral education with practice. By innovating instructional methods and means, such as mixed teaching mode, case teaching and situational teaching, and strengthening the practical links of moral education, such as social practice and voluntary service, campus culture and community activities, the effect of IPE can be comprehensively improved. Through the implementation of these strategies, it is found that the innovative IPE model not only stimulates students' interest and enthusiasm in learning, but also significantly improves their moral literacy and social responsibility. Furthermore, students have exercised their abilities in practice and realized the all-round development of knowledge, skills and attitudes.

1. Introduction

In today's society, the IPE of university students is particularly important [1]. With the development of the times, the expectations and requirements of the society for university students are constantly changing [2]. The traditional IPE model for university students has been difficult to meet the current educational needs in some aspects [3]. Therefore, it is needed to carry out in-depth discussion on the educational concept of "Foster Morality and Cultivate People" in order to find an educational model that is more in line with the requirements of the times [4].

The current situation of IPE of contemporary university students: At present, although the IPE of university students has achieved some results, there are still many shortcomings [5]. Many students report that the content of IPE is boring, the method is single, and there is no connection with real life [6]. Therefore, how to make IPE more lively and interesting and close to students' reality has become an urgent problem.

Moral education is the core of China's traditional educational concept, which emphasizes the importance of moral education and pays attention to cultivating students' moral concept and social responsibility [7]. Today, "Foster Morality and Cultivate People" educational concept is still of great significance, which reminds us that the essence of education is not only to impart knowledge, but also to cultivate students' personality and morality [8]. In-depth study of "Foster Morality and Cultivate People" educational concept will help us better understand the goals and tasks of IPE in colleges and universities (IPECU).

2. "Foster Morality and Cultivate People" educational philosophy

2.1. The connotation of "Foster Morality and Cultivate People"

"Foster Morality and Cultivate People" educational concept emphasizes the primary position of

moral education in education. This concept holds that the primary task of education is to cultivate students' moral quality and make students become people with noble moral character [9]. This educational concept pays attention to students' inner cultivation and personality shaping, aiming at cultivating citizens with social responsibility, good moral demeanor and sound personality.

In higher education, "Foster Morality and Cultivate People" educational concept is embodied in all aspects. First of all, in terms of curriculum, colleges and universities should pay attention to offering courses related to moral education, such as ideological and moral cultivation and legal basis [10]. Secondly, in instructional methods, teachers should pay attention to guiding students to think, discuss and reflect, and cultivate students' moral judgment ability and moral behavior. Finally, in the construction of campus culture, colleges and universities should pay attention to creating a positive cultural atmosphere, encourage students to participate in social practice and volunteer service, and cultivate students' sense of social responsibility and dedication.

2.2. The relationship between moral education and university students' development

"Foster Morality and Cultivate People" educational concept has an important influence on university students' personality shaping. By cultivating students' moral quality and social responsibility, students can be helped to establish a correct world outlook, outlook on life and values. This educational concept helps students to form a sound personality and good psychological quality, and lays a solid foundation for future development and growth.

"Foster Morality and Cultivate People" educational concept emphasizes cultivating students' sense of social responsibility. By participating in social practice and voluntary service, students can have a deeper understanding of social problems and practical needs, thus enhancing their sense of social responsibility. This educational concept is helpful to cultivate students' civic awareness and legal awareness, and make them become citizens with social responsibility and responsibility.

3. Analysis of the current situation of IPECU

With the rapid development of society and the changes of the times, the traditional IPE content has been difficult to adapt to the current social needs. Some old concepts and theories can't explain the new problems and challenges in real life, which makes IPE lose its due times and pertinence. The characteristics and problems of the traditional IPE model are shown in Table 1.

Table 1 Characteristics and problems of traditional IPE model

Characteristics and problems	Describe
model of instruction	Give priority to classroom teaching
Content of courses	Emphasis on theoretical knowledge, such as political theory, ideology and morality.
Instructional method	"Cramming" teaching, instilling knowledge points into students.
Students' learning state	Students are in a passive acceptance state.
Students' learning restrictions	Learning initiative and creativity are limited.
Content understanding	It is difficult for students to truly understand and internalize the content of IPE.
Evaluation method	Taking test scores as the only criterion to measure students' learning effect.
Assess problems	Ignore the investigation of students' comprehensive qualities such as ideological quality and moral accomplishment.
Reflection of educational achievements	It is difficult to fully reflect the achievements of students' IPE.

In the current IPE, the concept of moral education has not been fully implemented. Many teachers pay too much attention to imparting knowledge and neglect the cultivation of students' moral quality and social responsibility. The lack of this educational concept leads to students' lack

of correct moral judgment and choice ability in the face of social problems, and it is difficult to become citizens with noble morality.

4. Innovation path of IPE mode in universities

4.1. A new mode of IPE integrated with the idea of "Foster Morality and Cultivate People"

The new IPE model should be student-centered and pay attention to students' actual needs and development. Teachers should respect students' personality differences, stimulate students' interest and enthusiasm in learning, and guide students to grow up in thinking and exploration. Furthermore, teachers should also pay attention to cultivating students' autonomous learning ability and cooperative spirit, so that they can continue to develop and progress in their future study and work.

Curriculum design should pay attention to the combination of moral education and practice, so that students can experience and understand moral principles and social responsibilities in practice. Teachers can let students participate in solving social problems by organizing social practice activities and voluntary service, so as to cultivate students' sense of social responsibility and civic awareness.

4.2. Innovative instructional methods and means

Adopting the mixed teaching mode of combining online and offline, making full use of network resources and technical means to improve teaching efficiency and effect. Teachers can publish learning resources, organize discussions and exchanges through the network platform, and guide students to study and think independently. Furthermore, offline classroom can pay more attention to practicality and interaction, and stimulate students' interest in learning and creativity.

The methods of case teaching and situational teaching are introduced to enable students to learn and apply ideological and political knowledge in specific situations. Teachers can guide students to think and discuss deeply by analyzing typical cases and simulating actual scenes, and cultivate students' ability to analyze and solve problems. This method can not only enhance students' practical ability and innovative consciousness, but also improve students' moral judgment and social responsibility.

4.3. Strengthen the practical link of "Foster Morality and Cultivate People"

Encourage students to participate in social practice and voluntary service activities, and cultivate students' sense of social responsibility and civic awareness through personal experience and practice. Schools can cooperate with social organizations and enterprises to carry out practical activities and provide more practical opportunities and resources for students. Furthermore, schools can also set up volunteer service posts or organize volunteer service activities to guide students to actively participate in social welfare undertakings.

Strengthen the construction of campus culture and the organization of community activities to create a positive campus cultural atmosphere. Schools can enrich students' after-school life by holding various cultural activities, lectures and competitions, and improve students' cultural literacy and aesthetic ability. Furthermore, encourage and support students to organize community activities spontaneously, and cultivate students' teamwork spirit and leadership ability. These activities can not only promote the all-round development of students, but also provide a good environment and atmosphere for the implementation of "Foster Morality and Cultivate People" educational concept.

5. The implementation strategy of innovative IPE model

5.1. The change of teachers' role

In the traditional mode of IPE, teachers often play the role of imparting knowledge, instilling political theory and ideological and moral concepts into students. However, in the innovative IPE mode, the role of teachers needs to be fundamentally changed, that is, from a simple knowledge imparting to a thinking guide. The transformation of teachers' instructional methods and the

cultivation of students' ability are shown in Figure 1.

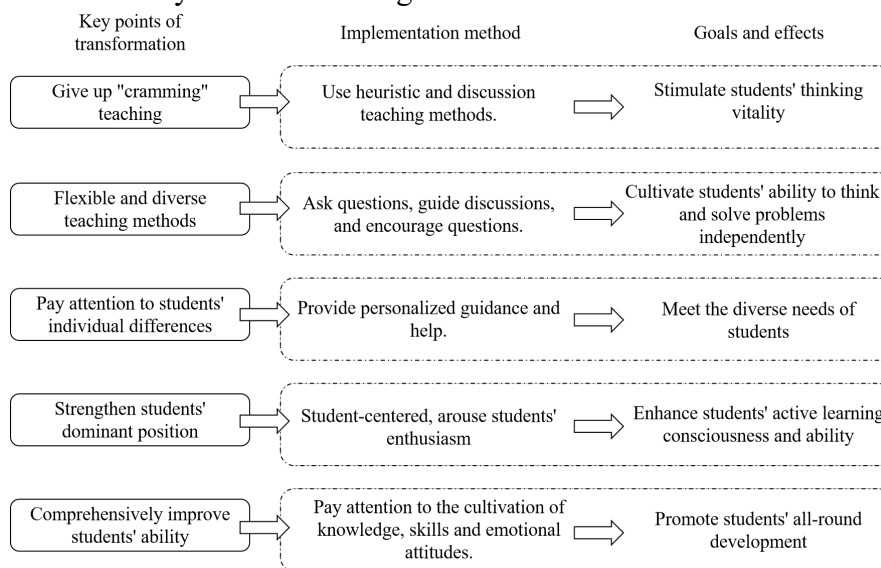


Figure 1 The transformation of teachers' instructional methods and the cultivation of students' ability

Innovative IPE mode puts forward higher requirements for teachers' professional quality. Teachers need not only profound knowledge of political theory and ideological and moral literacy, but also multi-disciplinary knowledge, such as pedagogy, psychology and sociology. Furthermore, good communication and coordination skills are essential for teachers to interact with students and guide them to think deeply. In order to improve teachers' professional quality, schools should organize regular training, academic exchanges and seminars, build a platform for learning and progress, and encourage teachers to continuously improve their professional quality and teaching ability through competitive mechanisms such as teaching competitions and selection of outstanding teachers.

5.2. Reconstruction of the curriculum system

In the innovative IPE mode, interdisciplinary integration of IPE resources is the core strategy. Schools need to break the boundaries of disciplines, integrate IPE with other disciplines such as humanities and social sciences, and build a comprehensive and multidimensional framework of IPE. For example, combining the courses of history, literature and philosophy, and using rich cultural and philosophical ideas, students can deepen their understanding of socialist core values and Chinese culture. Furthermore, in order to implement the idea of cultivating people by virtue, schools should add courses on moral cultivation, civic awareness and social responsibility. Through the discussion of practical cases and social hot issues, students' moral literacy and legal awareness can be improved, and their sense of social responsibility and practical innovation ability can be cultivated.

5.3. The use of educational technology

With the progress of information technology, online teaching platform is becoming more and more important in IPE. Schools can build an online education platform to provide a variety of ideological and political course resources, such as online videos and e-books, so that students can study anytime and anywhere. Teachers can use the data analysis function to provide personalized teaching. Furthermore, develop multimedia teaching resources such as courseware and micro-movies, visualize abstract knowledge, stimulate students' interest, encourage students to participate in production, and cultivate their practice and innovation ability.

6. Conclusions

This study deeply discusses the core position of "Foster Morality and Cultivate People" idea in

IPECU. "Foster Morality and Cultivate People" is not only the wisdom of ancient education, but also an indispensable part of modern education. In the IPECU, it emphasizes the importance of moral education and personality cultivation, and provides a comprehensive and moral-based growth environment for students. Through comparative analysis, we can clearly see that the practice of IPE that successfully integrates the idea of cultivating people by virtue has shown remarkable effects in shaping students' outlook on life, values and world outlook. This educational concept not only helps students to establish a solid moral foundation, but also cultivates their sense of social responsibility, so that they can stick to principles and make correct judgments and choices in the face of complex and changeable social environment.

Through in-depth research and practical application of innovative IPE mode, this study finds that this education mode has played a significant role in promoting students' all-round development. The traditional mode of IPE often focuses on inculcating knowledge, while ignoring students' subjectivity and practicality. In contrast, the innovative IPE mode pays more attention to the actual needs of students, and effectively stimulates students' interest and enthusiasm in learning through diversified instructional methods and means, such as mixed teaching, case teaching and situational teaching. These new instructional methods not only improve the learning effect of students' ideological and political courses, but also help them to exercise their abilities in practice and realize the all-round development of knowledge, skills and attitudes.

References

- [1] Sun Xiaolin. Research on the Innovation of IPE Mode from the Perspective of "Moral Cultivation" [J]. Journal of Huainan Vocational and Technical College, 2022, 22(5):34-36.
- [2] Liu Manyu. Explore the collaborative education mode of IPE and innovation and entrepreneurship education in colleges and universities from the perspective of "Foster Morality and Cultivate People" [J]. University: Ideological and Political Teaching and Research, 2023(6):37-41.
- [3] Lin Nan, Yuan Songyan. Research on the innovation of IPE mode in art colleges from the perspective of "double innovation"-taking Jilin Institute of Art as an example [J]. Journal of Jilin Institute of Education, 2021, 37(6):5.
- [4] Shi Xiufang. Research on the Innovation of Teaching Mode of IPE in Higher Vocational Colleges Based on Media Tools [J]. Journalism Research Guide, 2023, 14(13):205-207.
- [5] Zhang Pingping, Zuo Binfeng, Zhou Xiuhua. "Social Work+IPE". Research on the Innovation of University Students' IPE Model [J]. Journal of Tongling Vocational and Technical College, 2021, 20(2):6.
- [6] Zhu Peilun. Innovation of IPE mode in vocational colleges from the perspective of "Foster Morality and Cultivate People" [J]. Journal of heihe university, 2022, 13(4):3.
- [7] Wang Zhi, Chen Hongying. Practical exploration of vocational Chinese classroom teaching under the background of IPE [J]. Education Research, 2023, 6(3):13-15.
- [8] Jiang Taozhang. Research on the innovative mode of IPE for college counselors in the new media era [J]. Journal of Guangdong Communications Vocational and Technical College, 2023, 22(3):120-123.
- [9] Zhu Peilun. Innovation of IPE mode in vocational colleges from the perspective of "Foster Morality and Cultivate People" [J]. Journal of heihe university, 2022, 13(4):40-41.
- [10] Ma Xinlong. Exploration on the innovative development of IPE in colleges and universities based on the goal of cultivating people by virtue-comment on "Analysis on the problems faced by IPE in colleges and universities in the new era and the solutions" [J]. Science and Technology Management Research, 2022, 42(10):237.